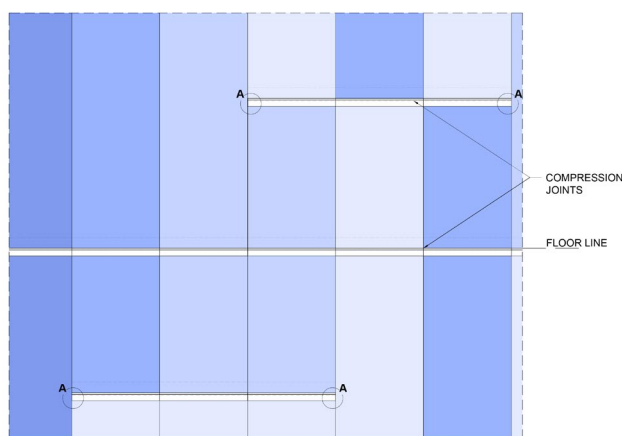




## OVERVIEW

The Nichiha AWP Vertical Panels may be staggered in minimum groups of three panels. Full-length compression joints must be installed at each floor line. The Vertical AWP staggered panel groups must be installed as prescribed by the Vertical AWP Installation Guide, including a compression joint at the bottom of each panel group. Please reference the [Vertical AWP Installation Guide](#) for Vertical Starter Track fastening requirements. In addition to installing the staggered vertical panel groups in accordance with the Nichiha AWP Vertical Installation Guide, the compression Z-flashing must be closed with end dams at the end of flashing at both ends of the panel groups in order to prevent water infiltration into the rainscreen cavity (see Figure A). See Figure B for example of full building layout.

Please contact the Nichiha Technical Department with any questions: [technicalservices@nichiha.com](mailto:technicalservices@nichiha.com).



### DETAIL A

Z-Flashing End Dam

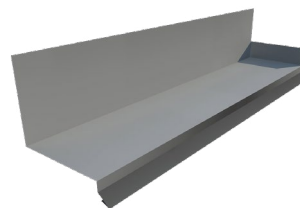


FIGURE A

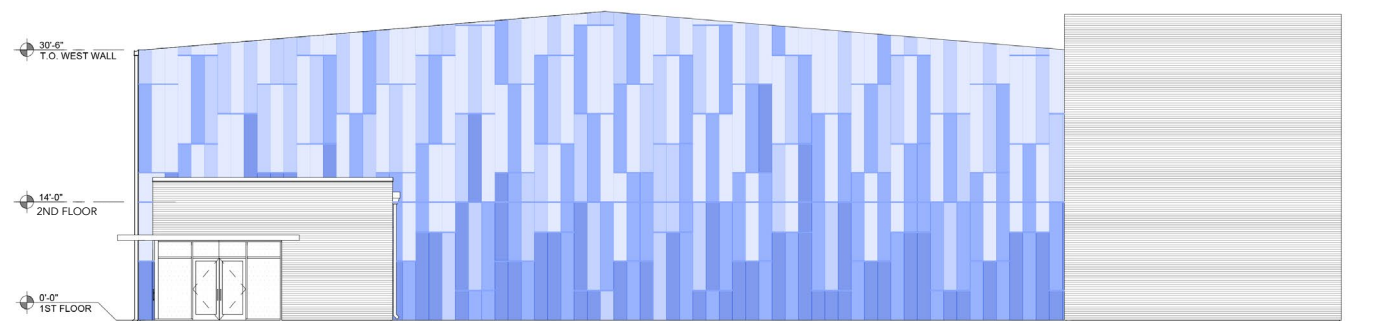


FIGURE B



## INSTRUCTIONS FOR CREATING AN END DAM FROM Z FLASHING

### 1. Mark the Layout:

Measure 1/2" from the edge of the Z flashing and mark this point to define the section to be modified.

### 2. Draw the Cut Lines:

With a marker or scribe, carefully draw the layout on the metal sheet. Ensure all lines are straight and precise for accurate cuts and bends.

### 3. Cut the Z Flashing:

Trim out and remove a 1/2-inch piece from both the bottom and top flanges, leaving a 1/2-inch section intact in the middle of the flashing.

### 4. Create the End Dam:

- Bend the remaining 1/2-inch section upward at a 90-degree angle to form the end dam.
- Use a shape metal hand seamer to create clean and precise bends.

### 5. Seal the End Dam:

Apply a high quality, exterior grade sealant to the back corner of the end dam to ensure a watertight seal.

### 6. Install the Flashing:

- Position the modified Z flashing at the desired location, ensuring that the end dam is correctly oriented to prevent water from running off the edge
- Secure the flashing into place using appropriate fasteners
- Seal the top of the flashing using the same sealing method or material being used on the project

### Recommended Tools:

- Measuring tape
- Marker or scribe
- Band saw, oscillating metal cutting tool, or metal snips
- Metal hand seamer
- High-quality exterior grade sealant

